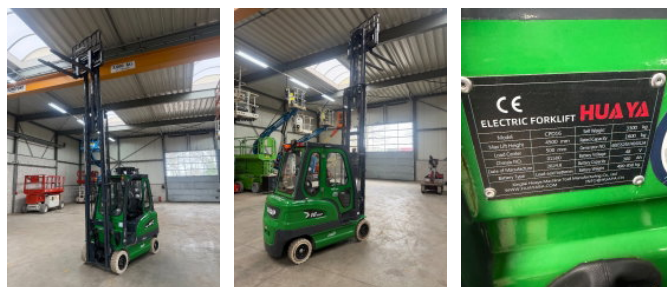
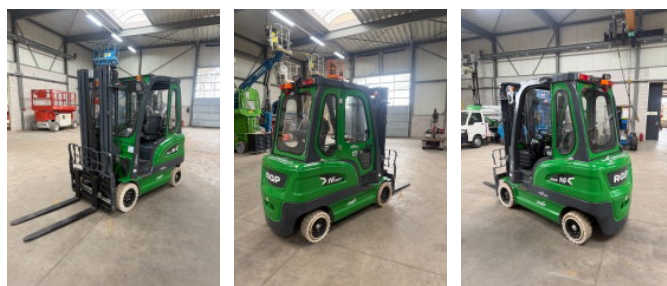


Huaya CPD16

General characteristics

Brand	Huaya
Subcategory	Forklift
Year of construction	2024
Hours displayed	267
Condition	Used
General state	Very good
Fuel	Electric



Properties

Max. lifting capacity 1.600kg

Mast type Triplex

Huaya CPD16

Technical specifications

Transmission

Automatic

Accessories